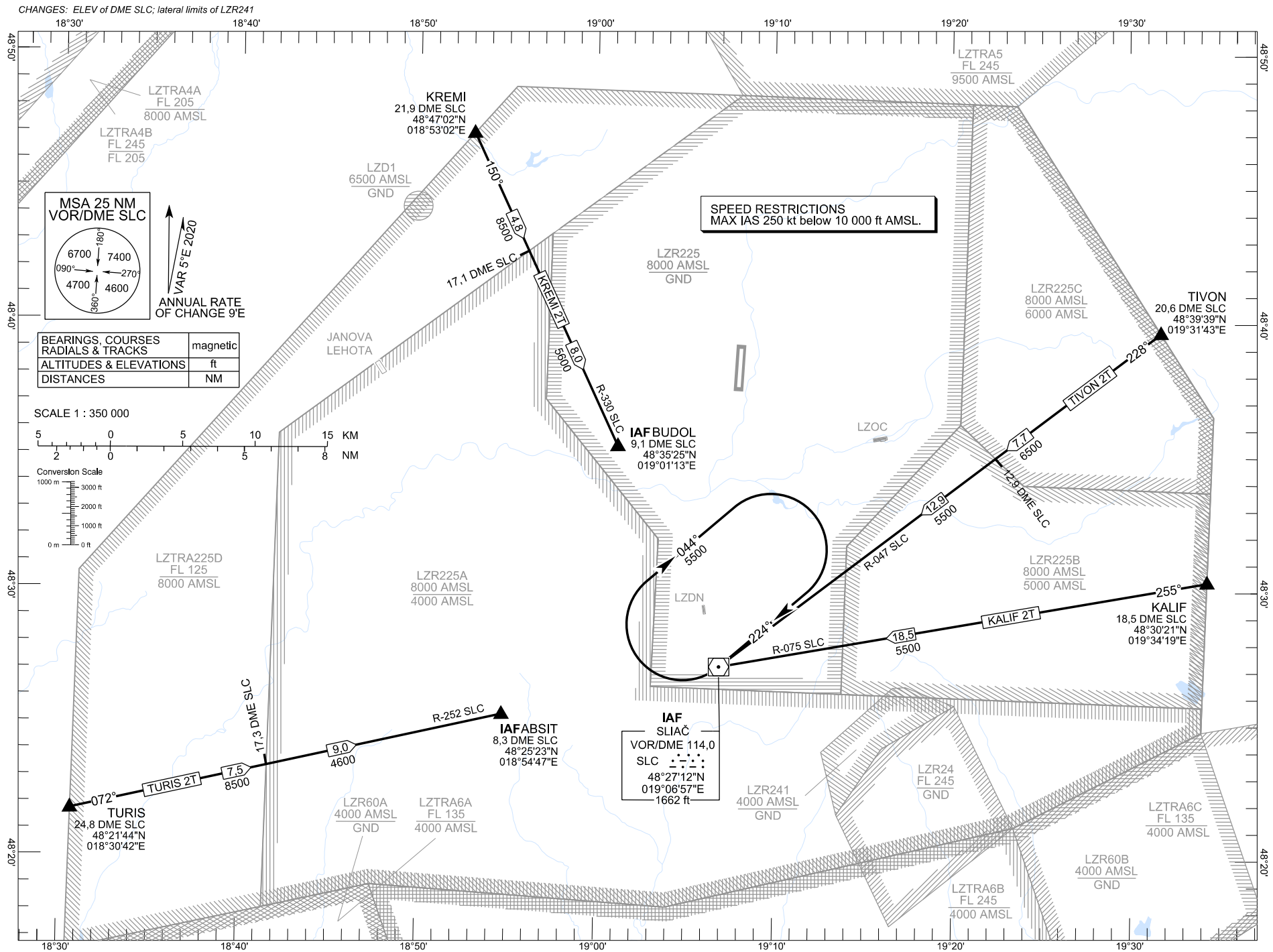


STANDARD ARRIVAL CHART -
INSTRUMENT (STAR) - ICAO

TRANSITION ALTITUDE
10 000 ft

SLIAČ APPROACH/RADAR
SLIAČ TOWER
119,155
122,905

SLIAČ (LZSL)
STAR RWY 36
ACFT CAT A/B/C/D



MSA 25 NM VOR/DME SLC

VAR 5°E 2020
ANNUAL RATE OF CHANGE 9'E

BEARINGS, COURSES RADIALS & TRACKS	magnetic
ALTITUDES & ELEVATIONS	ft
DISTANCES	NM

SCALE 1 : 350 000

