

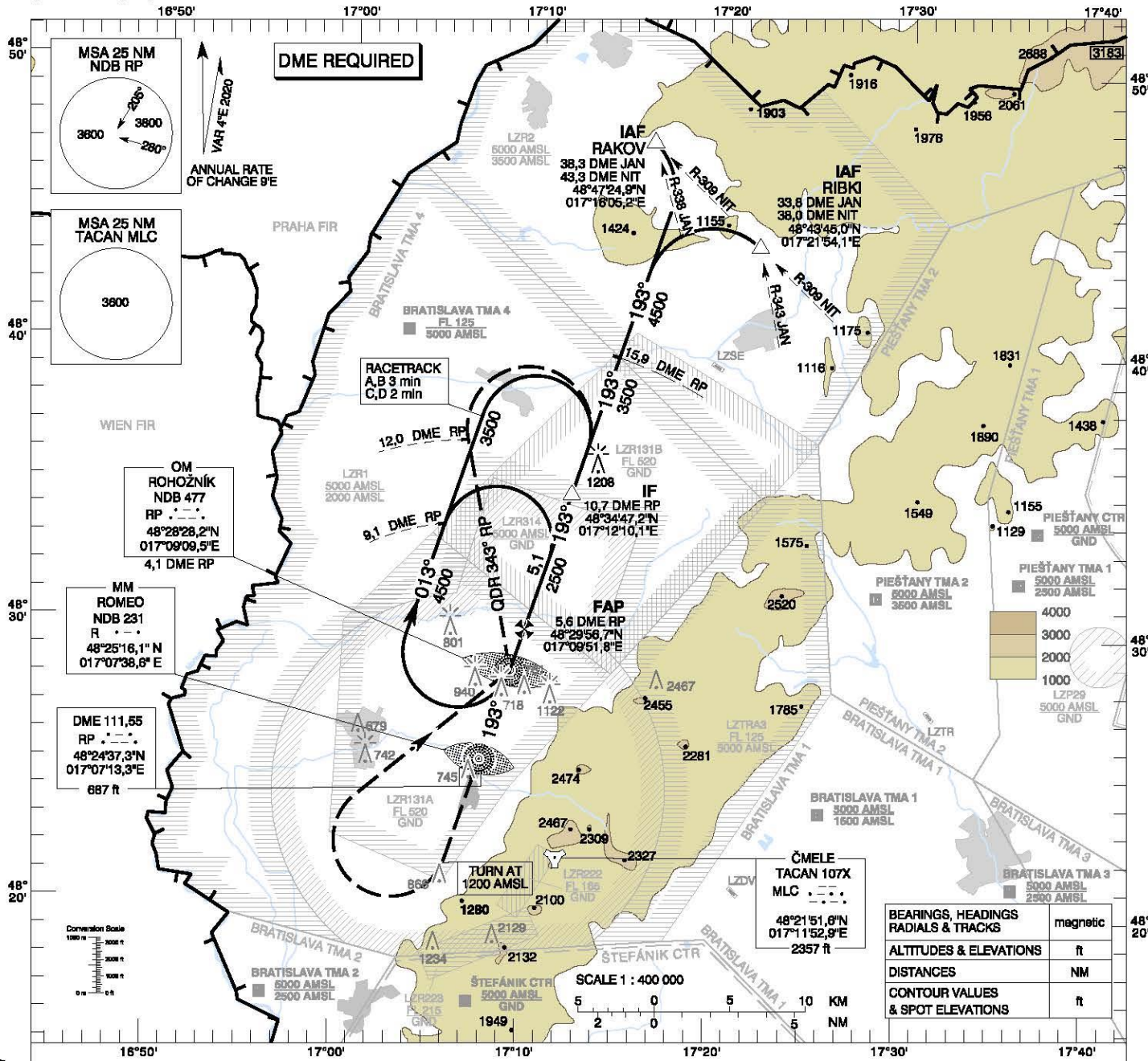
1. FROM 01.01.2020 00:01: AIRCRAFT ARRESTING NETS TYPE TFF-82 FOR RWY 01 AND 19 U/S. EST: UFN
2. FROM 01.01.2020 00:01: EMERGENCY GRASS STRIP CLSD. EST: UFN
3. FROM 17.12.2020 06:00: PILOTS MUST STRICTLY FOLLOW MARSHALERS INSTRUCTIONS AT APRONS. EST: UFN
4. FROM 20.04.2022 11:14: TWY F OUT OF SERVICE. EST: UFN
5. FROM 21.11.2023 06:00: RWY 01/19 CLSD DUE TO WORK IN PROGRESS. EST: UFN
6. FROM 21.11.2023 06:00: RWY 01 AVAILABLE FOR ARRIVAL AFTER AT LEAST 30 MIN. PRIOR COORDINATION. RWY 01/19 AVAILABLE FOR DEPARTURE AFTER AT LEAST 30 MIN. PRIOR COORDINATION. EST: UFN
7. FROM 21.11.2023 06:00: CAUTION RWY 01 TORA SHORTENED TO 7709FT (2350m), TODA SHORTENED TO 7709FT (2350m), LDA SHORTENED TO 7709FT (2350m), ASDA SHORTENED TO 7709FT (2350m) ON THE DEPARTURE END OF RWY 01. EST: UFN
8. FROM 21.11.2023 06:00: CAUTION WORK IN PROGRESS ON THE NORTH EDGE OF RWY 19 ON THE CONCRETE AREA 15m LEFT AND RIGHT FROM CENTERLINE. (MEN AND EQUIPMENT UNDER TWR SUPERVISION). EST: UFN
9. FROM 21.11.2023 06:00: CAUTION LIGHTENING SYSTEM RWY 19 DURING WIP HIALS, SFL, HIRL, FOR RWY 19 MIGHT BE U/S, REDL CHANGED FROM EVERY 60m TO EVERY 120m. EST: UFN
10. FROM 21.11.2023 06:00: CAUTION LIGHTENING SYSTEM RWY 01 DURING WIP REDL CHANGED FROM EVERY 60m TO EVERY 120m. EST: UFN
11. FROM 20.05.2024 15:00: PRECISION RADAR APPROACH AVAILABLE ONLY FOR AIRCRAFTS OF THE SLOVAK AIR FORCE ACCORDING TO CHART AD LZMC 7-5 (13JUL23). FOR AIRCRAFTS NOT OPERATED BY SLOVAK AIR FORCE PRECISION RADAR APPROACH NOT AVAILABLE. NDB/ILS/VISUAL APPROACH IN USE. EST: UFN

**INSTRUMENT
APPROACH
CHART - ICAO**

TRANSITION ALTITUDE
10 000 ft
AD ELEV 689 - 25 hPa
THR RWY 19 ELEV 686 - 25 hPa

MALACKY PRECISION 127,150
MALACKY RADAR 120,750 (259,825)
MALACKY TOWER 129,575 (120,750)

**MALACKY (LZMC)
PAR RWY 19
ACFT CAT A/B/C/D**



OM ROHOŽNÍK
NDB 477
RP ---
48°28'28,2"N
017°09'09,5"E
4,1 DME RP

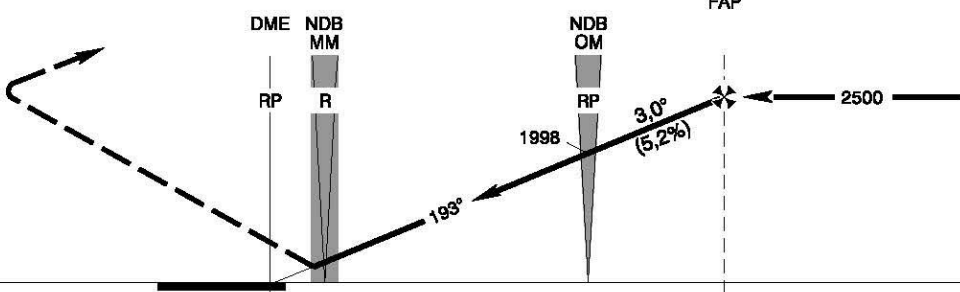
MM ROMEO
NDB 231
R ---
48°25'16,1"N
017°07'38,8"E

DME 111,55
RP ---
48°24'37,3"N
017°07'13,3"E
687 R



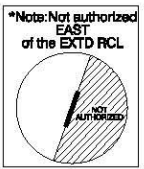
BEARINGS, HEADINGS	magnetic
RADIALS & TRACKS	magnetic
ALTITUDES & ELEVATIONS	ft
DISTANCES	NM
CONTOUR VALUES & SPOT ELEVATIONS	ft

MISSED APPROACH
Climb STRAIGHT AHEAD, at 1200 AMSL turn RIGHT to NDB RP, climbing to 3500 AMSL. At NDB RP turn LEFT to track 343° (QDR 343° RP), at 12 DME RP turn RIGHT to join the hold or initiate another approach. MAX IAS 185 kt. No turn before MM.



RDH 56,8
THR RWY 19 ELEV 686 - 25 hPa
NM to/from THR RWY 19

OCA (OCH)	ASC	A	B	C	D
Straight - In Approach	2,5% ft	951 (285)	963 (277)	971 (285)	982 (296)
Circling (* see Note)	ft	1120 (431)	1190 (501)	1650 (961)	1810 (1121)
VIS	m	1800	2800	3600	4600



DME RP	NM	7,0	6,0	5,0	4,0	3,0	2,0	1,0
ALTITUDES	ft	2953	2624	2296	1970	1645	1323	1001

Ground speed	kt	70	90	100	120	140	160	180
Rate of descent (5,2%)	ft/min	372	478	531	637	743	849	955

CHANGES: MAG VAR; MAG BRG; RDH; OCA(OCH) Straight - In Approach; IF and FAP position